



# Coreline Bollard

## ZCP150 ANB L500

Anchor bolt

Coreline Bollard is a professional bollard that will guide people at night time and will integrate very well in most urban landscape thanks to its discreet design.

### Product data

| General information    |             |
|------------------------|-------------|
| Protection class IEC   | -           |
| CE mark                | CE mark     |
| Material               | Steel       |
| Mechanical accessories | Anchor bolt |
| Angle                  | -           |
| Accessory color        | Anthracite  |
| Accessory PFC          | ZCP150      |

| Operating and electrical |      |
|--------------------------|------|
| Input Voltage            | - V  |
| Input Frequency          | - Hz |

| Mechanical and housing              |                    |
|-------------------------------------|--------------------|
| Overall length                      | 500 mm             |
| Overall height                      | 500 mm             |
| Overall diameter                    | 100 mm             |
| Dimensions (Height x Width x Depth) | 500 x NaN x 500 mm |

| Approval and application     |                               |
|------------------------------|-------------------------------|
| Ingress protection code      | -                             |
| Mech. impact protection code | IK10 [ 20 J vandal-resistant] |

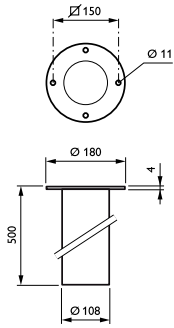
  

| Product data                    |                 |
|---------------------------------|-----------------|
| Full product code               | 871869938379400 |
| Order product name              | ZCP150 ANB L500 |
| EAN/UPC - Product               | 8718699383794   |
| Order code                      | 912401483113    |
| Numerator - Quantity Per Pack   | 1               |
| Numerator - Packs per outer box | 1               |
| Material Nr. (12NC)             | 912401483113    |
| Net Weight (Piece)              | 3.700 kg        |



# Coreline Bollard

## Dimensional drawing



ZCP150 ANB L500

