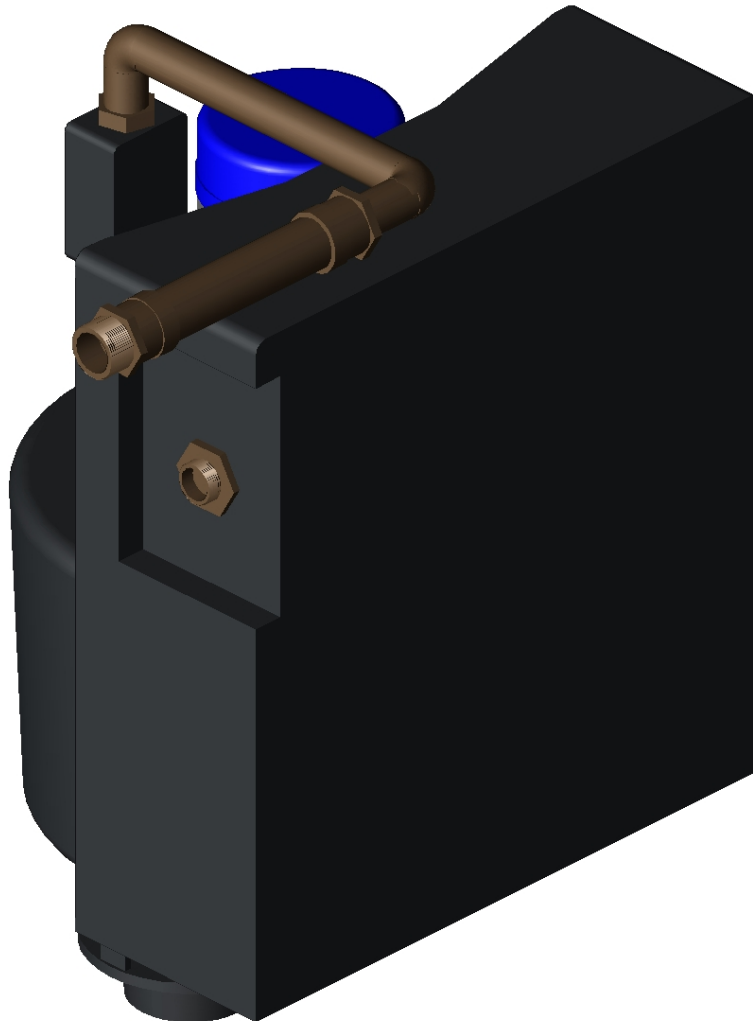


CBU140-25A-043

CAD DATA

3D Functions

(click on picture to activate)



CAD Files

(double click on top of icon to open, right click to save)

[Honeywell_CBU140-25A-043_3D.dxf \(DXF V2004\)](#)
[Honeywell_CBU140-25A-043_3D.dwg \(DWG V2004\)](#)
[Honeywell_CBU140-25A-043_3D.stp \(STEP AP214\)](#)
[Honeywell_CBU140-25A-043_3D.igs \(IGES 5.3\)](#)
[Honeywell_CBU140-25A-043_3D.sat \(SAT 7.0\)](#)
[Honeywell_CBU140-25A-043_2D_Left.dwg \(DWG V2004\)](#)
[Honeywell_CBU140-25A-043_2D_Right.dwg \(DWG V2004\)](#)
[Honeywell_CBU140-25A-043_2D_Front.dwg \(DWG V2004\)](#)
[Honeywell_CBU140-25A-043_2D_Top.dwg \(DWG V2004\)](#)

Product data	
Brand:	Honeywell
Date:	21.10.2013
Inlet Connection:	DN25
Max. media temp:	35 °C
Operating pressure:	6 bar
Pumping head:	43 m