

Tube Wall Up&Down

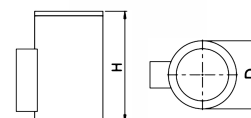
1076-45-1



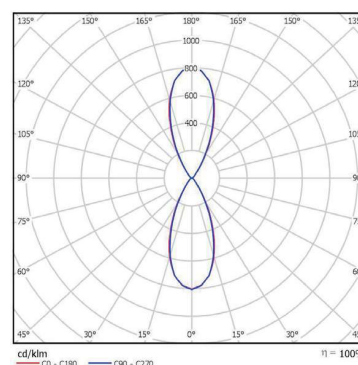
Tube Wall Up&



Lightsource Type:	LED (built in)
System Power [W]:	39W
CCT (Color Temperature):	3000K
CRI / Ra:	80
Lumen Output:	4111lm
Lumen LED (tc=25):	5558lm
Beam Angle:	45°
Lens (Diffuser):	None
Dimming:	None
System Voltage [V]:	230V 50Hz
Connection:	Terminal
Mounting:	Wall/Surface
Lifetime [h]:	L80B50: 50.000h
MacAdam (SDCM):	3
Color:	Dark Grey
Height [mm]:	464mm
Width [mm]:	155mm
Weight [kg]:	3,2kg



D, mm	H, mm
155	464
	250



All specifications are nominal values, deviations may occur.
 Product specifications are subject to change without notice.
 Electrical equipment designed to be part of a fixed electrical installation can only be installed by a registered installation company