

PRODUCT DOCUMENTATION



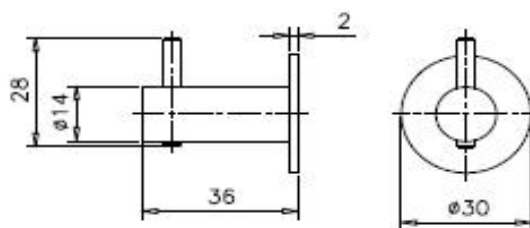
Product Name: Coat Hook, Ø14x36mm, with pin

Article Number: 14.5605.02.002
Satin stainless steel
16.5605.01.009
Polished stainless steel

Photo:



Drawing:



Product Information:

Material:	AISI 316 stainless steel		
Surface finish:	Satin 320 grain or polished		
Material thickness/radius:	Ø14		
Height:	Width:	Depth:	
28mm	30mm	36mm	

Product Specification:

d line Coat hook with pin Ø14x36mm with concealed fixing. AISI 316 satin stainless steel.

d line Coat hook with pin Ø14x36mm with concealed fixing. AISI 316 polished stainless steel.

The high humidity levels in the bathroom setting necessitates the use of a non-corrosive rust-resistant stainless steel. The only metal used in d line's bathroom fittings is AISI 316, also known as marine quality stainless steel.

Certificate: -
Warranty: 20 years (non-mechanical/-electronic parts)

Spare Parts/Accessories:

P0.0000.00.451	Screw and plug set.
14.4953.02.009	Rose & bush with turnstop ø30x2mm
16.4953.01.005	Rose & bush with turnstop ø30x2mm
14.9701.00.052	Grub screw M4x3mm

Related Products:

-

Mounting:

See instruction supplied with product

Packing:

1 pc. in a bag, 25 pcs. per box incl. Ø4.5x70mm screw with plug 8x40mm for fixing on concrete wall.

Maintenance:

Wash down with mild detergent, rinse off with clean water, and dry off with soft dry cloth.

Environment:

No environmental risk and no risk of fire.