



MASTER LEDtube T8 Ultra Efficient



MAS LEDtube 1200mm UE 13.5W 840 T8

With energy prices rising and the EU's Green Deal² continuing to fund energy efficient building renovations, many are looking into make their company's lighting more sustainable. The new Philips MASTER LEDtube Ultra Efficient T8 is a true breakthrough on the way to more sustainable lighting. It replaces your current fluorescent tube or LED tube directly and offers immediately great energy cost reduction as well as a much longer lifetime!

Product data

General information	
Cap-Base	G13 ROT (Rotating) [Medium Bi-Pin Fluorescent]
CE mark	Yes
EU RoHS compliant	Yes
Nominal Lifetime (Nom)	70000 h
Switching Cycle	200000
Flux measurement reference	Sphere
Tier	MASTER
Light technical	
Color Code	840 [CCT of 4000K]
Beam Angle (Nom)	160 °
Luminous Flux (Nom)	2500 lm
Color Designation	Cool White (CW)
Correlated Color Temperature (Nom)	4000 K
Luminous Efficacy (rated) (Nom)	185 lm/W
Color Consistency	<6
Color Rendering Index (Nom)	80

LLMF At End Of Nominal Lifetime (Nom) 70 %	
Operating and electrical	
Input Frequency	50 to 60 Hz
Power (Nom)	13.5 W
Lamp Current (Max)	69 mA
Lamp Current (Min)	56 mA
Starting Time (Nom)	0.5 s
Warm Up Time to 60% Light (Nom)	0.5 s
Power Factor (Nom)	0.9
Voltage (Nom)	220-240 V
Temperature	
T-Ambient (Max)	45 °C
T-Ambient (Min)	-20 °C
T-Storage (Max)	65 °C
T-Storage (Min)	-40 °C
T-Case Maximum (Nom)	55 °C

MASTER LEDtube T8 Ultra Efficient

Controls and dimming

Dimmable	No
----------	----

Mechanical and housing

Bulb Finish	Frosted
Bulb Material	Glass
Product Length	1200 mm
Bulb Shape	Tube, double-ended

Approval and application

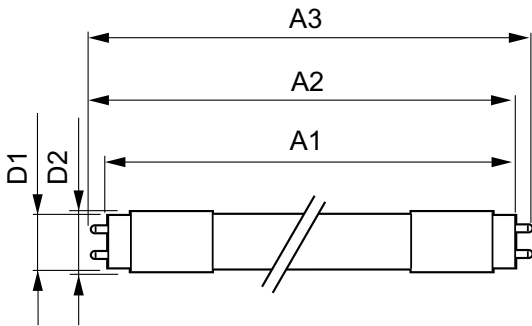
Energy Efficiency Class	B
Energy Saving Product	Yes
Approval Marks	RoHS compliance TUV CE marking KEMA Keur certificate

Energy Consumption kWh/1000 h	14 kWh
EPREL Registration Number	1205540

Product data

Full product code	871951433972900
Order product name	MAS LEDtube 1200mm UE 13.5W 840 T8
EAN/UPC - Product	8719514339729
Order code	929003067002
Numerator - Quantity Per Pack	1
Numerator - Packs per outer box	10
Material Nr. (12NC)	929003067002
Net Weight (Piece)	0.230 kg

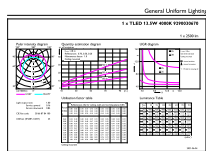
Dimensional drawing



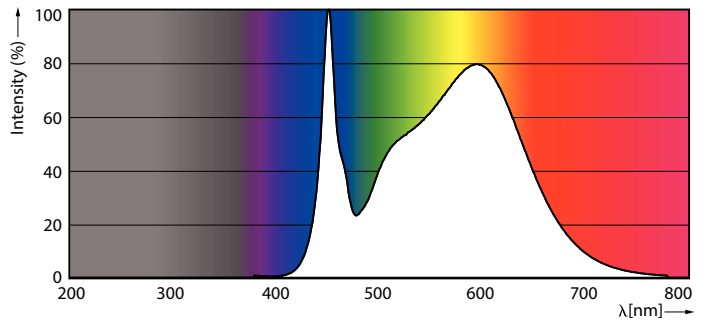
MAS LEDtube 1200mm UE 13.5W 840 T8

Product	D1	D2	A1	A2	A3
MAS LEDtube 1200mm UE 13.5W 840 T8	25.8 mm	28 mm	1198.2 mm	1205.3 mm	1212.4 mm

Photometric data



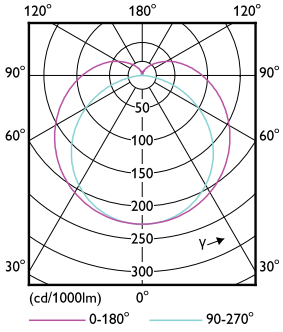
General uniform lighting



Spectral Power Distribution Colour

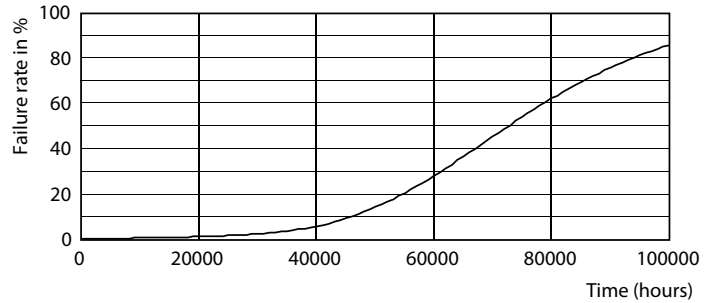
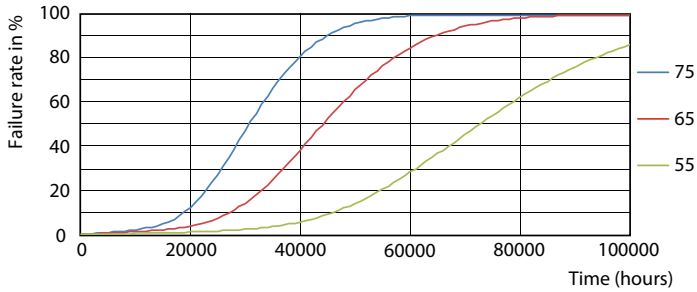
MASTER LEDtube T8 Ultra Efficient

Photometric data



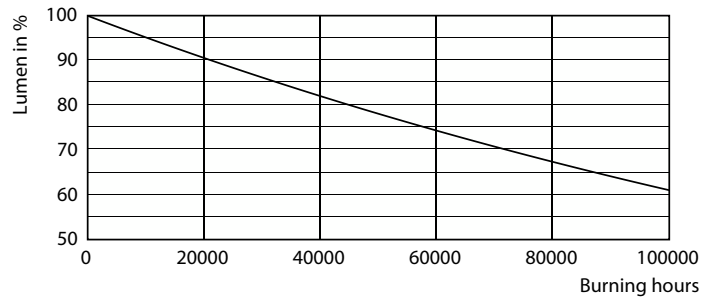
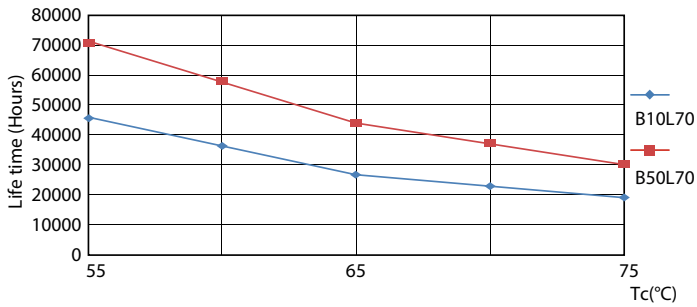
Light Distribution Diagram

Lifetime



LEDtube MAS 13,5W 70K FailureRate-LED

Life Expectancy Diagram

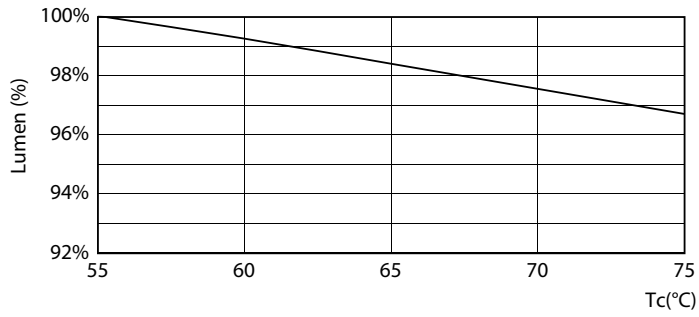


LEDtube MAS 13,5W 70K LifetimeVsTc-LED

Lumen Maintenance Diagram

MASTER LEDtube T8 Ultra Efficient

Lifetime



LumenVsTc

