



# MASTER LEDtube InstantFit HF T5



## Master LEDtube HF 1200mm HO 26W 840 T5 OE

The Philips MASTER LEDtube integrates a LED light source into a traditional fluorescent form factor. Its unique design creates a perfectly uniform visual appearance, which cannot be distinguished from traditional fluorescent. These T5 lighting tubes are the right choice for absolute performance and are designed to stand up to everyday conditions. Unparalleled savings thanks to low energy consumption and an exceptionally long lifetime make these T5 LED tubes the choice for every demanding application.

### Product data

General information	
Cap-Base	G5 [ G5]
CE mark	Yes
EU RoHS compliant	Yes
Nominal Lifetime (Nom)	60000 h
Switching Cycle	50000
Flux measurement reference	Sphere
Tier	MASTER
Light technical	
Color Code	840 [ CCT of 4000K]
Beam Angle (Nom)	200 °
Luminous Flux (Nom)	3900 lm
Color Designation	Cool White (CW)
Correlated Color Temperature (Nom)	4000 K
Luminous Efficacy (rated) (Nom)	150 lm/W
Color Consistency	<6
Color Rendering Index (Nom)	80

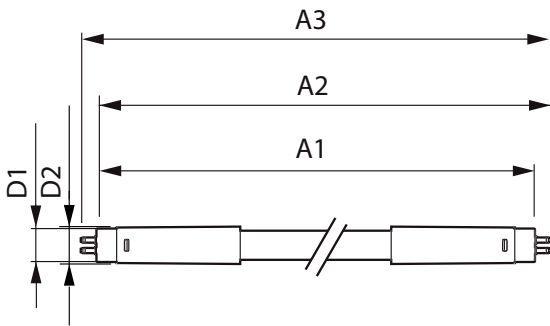
LLMF At End Of Nominal Lifetime (Nom) 70 %	
Operating and electrical	
Input Frequency	30K to 60K Hz
Power (Nom)	26 W
Lamp Current (Max)	620 mA
Lamp Current (Min)	300 mA
Wattage Equivalent	54 W
Starting Time (Nom)	0.5 s
Warm Up Time to 60% Light (Nom)	0.5 s
Power Factor (Nom)	0.9
Voltage (Nom)	20-90 V
Temperature	
T-Ambient (Max)	45 °C
T-Ambient (Min)	-20 °C
T-Storage (Max)	65 °C
T-Storage (Min)	-40 °C

# MASTER LEDtube InstantFit HF T5

T-Case Maximum (Nom)	55 °C
<b>Controls and dimming</b>	
Dimmable	Yes - Check ballast compatibility
<b>Mechanical and housing</b>	
Bulb Finish	Frosted
Bulb Material	Glass
Product Length	1200 mm
Bulb Shape	Tube, double-ended
<b>Approval and application</b>	
Energy Efficiency Class	D
Energy Saving Product	Yes
Approval Marks	RoHS compliance TUV CE marking KEMA Keur certificate

Energy Consumption kWh/1000 h	26 kWh
EPREL Registration Number	406210
<b>Product data</b>	
Full product code	871869974953800
Order product name	Master LEDtube HF 1200mm HO 26W 840 T5 OE
	OE
EAN/UPC - Product	8718699749538
Order code	929002352102
Numerator - Quantity Per Pack	1
Numerator - Packs per outer box	10
Material Nr. (12NC)	929002352102
Net Weight (Piece)	0.160 kg

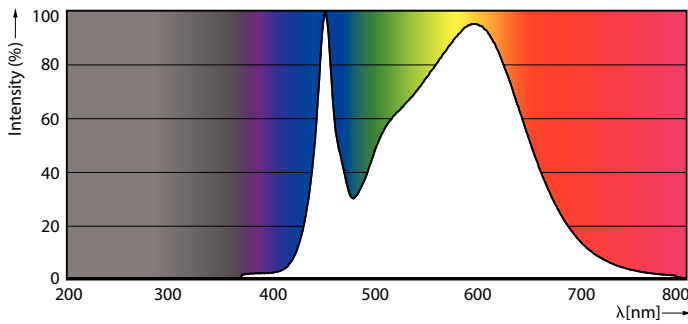
## Dimensional drawing



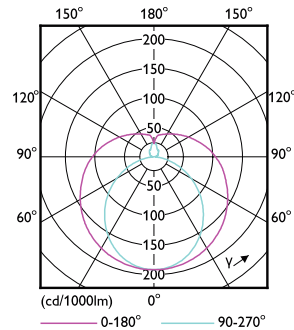
Master LEDtube HF 1200mm HO 26W 840 T5 OE

Product	D1	D2	A1	A2	A3
Master LEDtube HF 1200mm HO 26W 840 T5 OE	15,5 mm	19 mm	1149 mm	1156 mm	1163 mm

## Photometric data



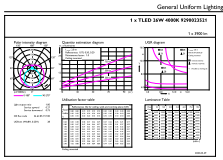
LEDtube MAS 26W G5 3900lm 840



LEDtube MAS 26W G5 3700lm

# MASTER LEDtube InstantFit HF T5

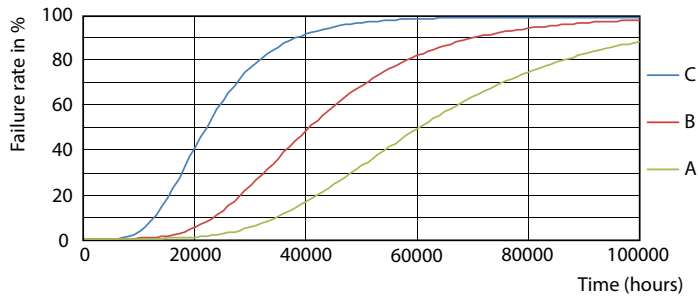
## Photometric data



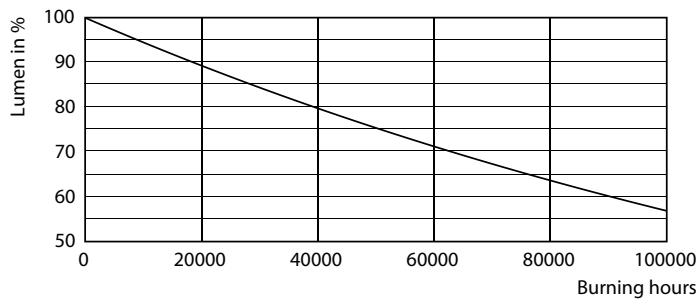
© 2023 Philips Lighting B.V. Page 11

LEDtube MAS 26W G5 3900lm 840 1200mm

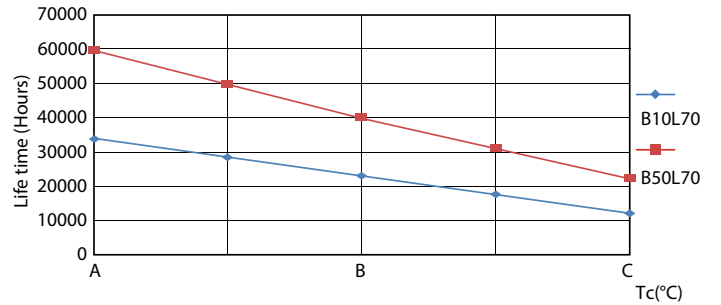
## Lifetime



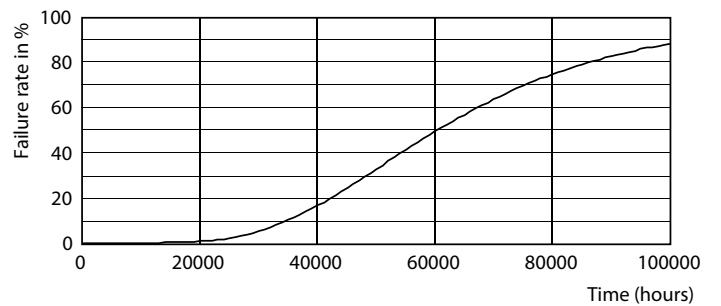
FailureRate



Lumen Maintenance Diagram



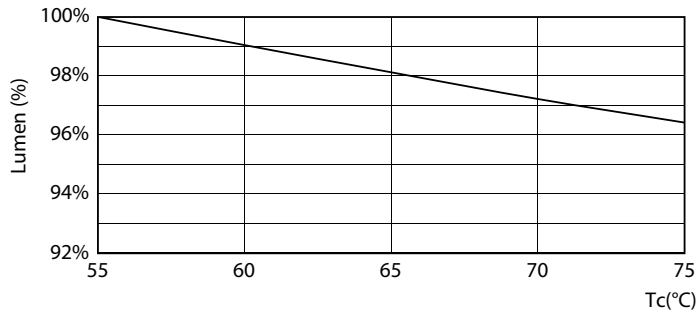
LifetimeVsTc



Life Expectancy Diagram

# MASTER LEDtube InstantFit HF T5

## Lifetime



LEDtube 26W 60K LumenVsTc 1

