



MASTER LEDtube Mains T5



MASTER LEDtube 1200mm HE 16.5W 840 T5 EU

The new Philips Master LEDtube Mains T5 brings simplicity to your lighting project. You don't need to pay attention to the driver technology anymore. Thanks to a unique design, Philips MASTER LEDtube Mains T5 installs in luminaires operating on mains power connection. So simple to operate! . Perfectly safe, reliable & easy to install Philips MASTER LEDtube Mains T5 is the ideal alternative to standard fluorescent tubes to maximize value over lifetime with high energy saving and lower maintenance costs.

Product data

General information	
Cap-Base	G5 [G5]
CE mark	Yes
EU RoHS compliant	Yes
Nominal Lifetime (Nom)	50000 h
Switching Cycle	200000
Flux measurement reference	Sphere
Tier	MASTER
Light technical	
Color Code	840 [CCT of 4000K]
Beam Angle (Nom)	200 °
Luminous Flux (Nom)	2500 lm
Color Designation	Cool White (CW)
Correlated Color Temperature (Nom)	4000 K
Luminous Efficacy (rated) (Nom)	151 lm/W
Color Consistency	<6
Color Rendering Index (Nom)	80

LLMF At End Of Nominal Lifetime (Nom) 70 %	
Operating and electrical	
Input Frequency	50 to 60 Hz
Power (Nom)	16.5 W
Lamp Current (Nom)	85 mA
Starting Time (Nom)	0.5 s
Warm Up Time to 60% Light (Nom)	0.5 s
Power Factor (Nom)	0.92
Voltage (Nom)	220-240 V
Temperature	
T-Ambient (Max)	45 °C
T-Ambient (Min)	-20 °C
T-Storage (Max)	65 °C
T-Storage (Min)	-40 °C
T-Case Maximum (Nom)	70 °C

MASTER LEDtube Mains T5

Controls and dimming

Dimmable	No
----------	----

Mechanical and housing

Bulb Finish	Frosted
Bulb Material	Glass
Product Length	1200 mm
Bulb Shape	Tube, double-ended

Approval and application

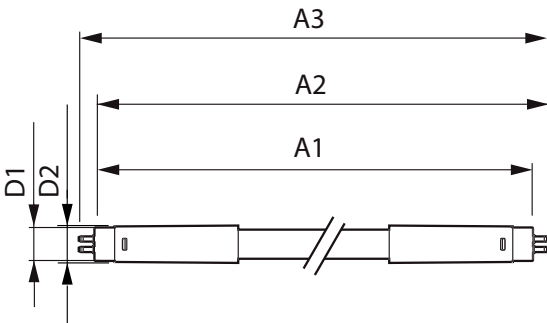
Energy Efficiency Class	D
Energy Saving Product	Yes
Approval Marks	RoHS compliance CE marking KEMA Keur certificate
Energy Consumption kWh/1000 h	17 kWh

EPREL Registration Number	467303
---------------------------	--------

Product data

Full product code	871951433433500
Order product name	MASTER LEDtube 1200mm HE 16.5W 840 T5 EU
EAN/UPC - Product	8719514334335
Order code	929003044502
Numerator - Quantity Per Pack	1
Numerator - Packs per outer box	10
Material Nr. (12NC)	929003044502
Net Weight (Piece)	0.215 kg

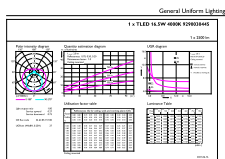
Dimensional drawing



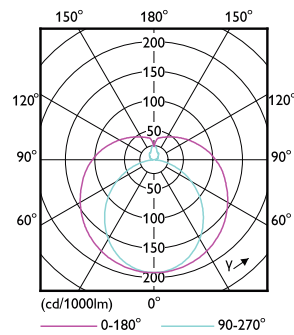
MASTER LEDtube 1200mm HE 16.5W 840 T5 EU

Product	D1	D2	A1	A2	A3
MASTER LEDtube 1200mm HE 16.5W 840 T5 EU	15.8 mm	19 mm	1149 mm	1156.1 mm	1163.2 mm

Photometric data



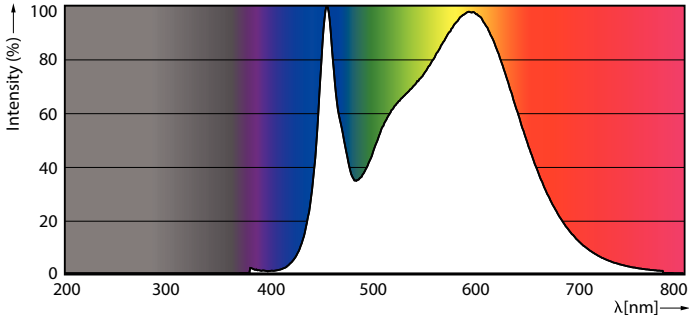
LEDtube MAS G3 16,5W G13 2500lm 840-GUL



LEDtube MAS 8W G5 1000lm

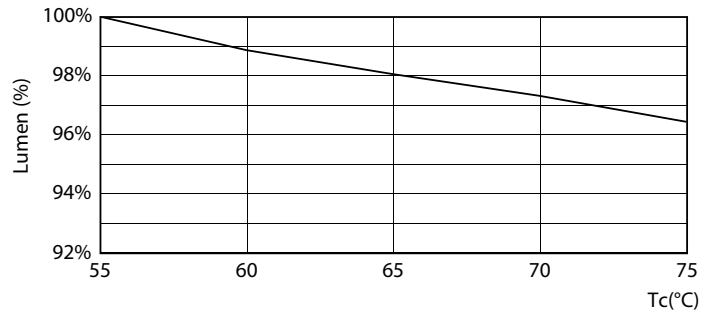
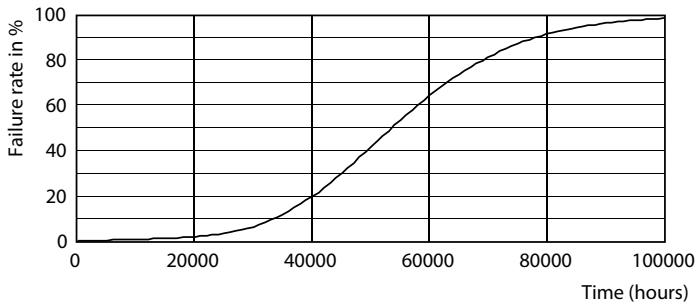
MASTER LEDtube Mains T5

Photometric data

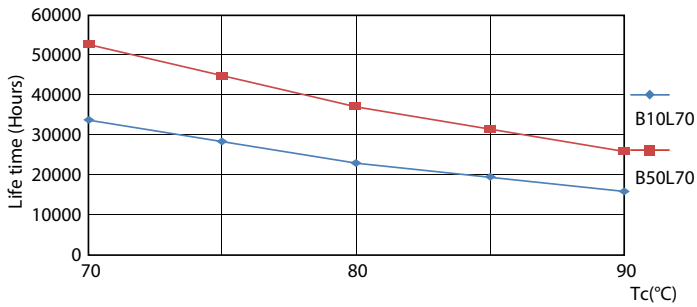


LEDtube MAS G3 16,5W G13 2500lm 840-POC

Lifetime

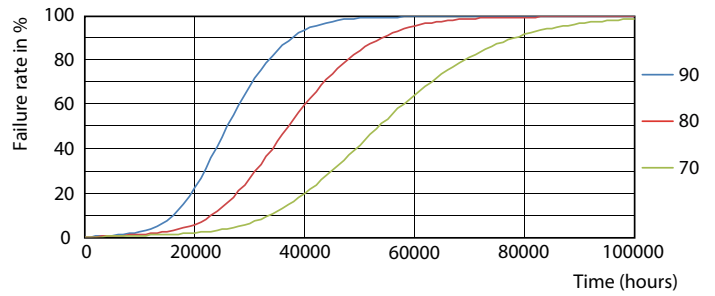


Life Expectancy Diagram



LEDtube MAS 1 26W 50K LifetimeVsTc-LED

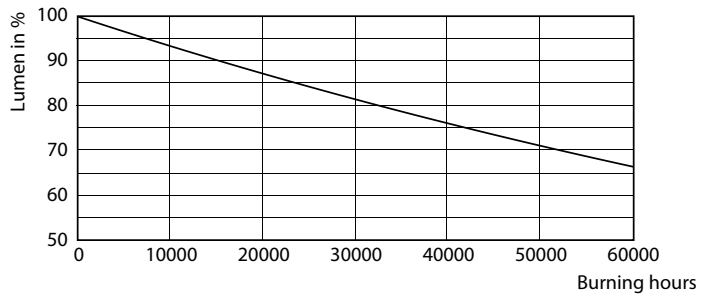
LEDtube MAS G3 8W 50K LumenVsTc-LMP



LEDtube MAS 1 26W 50K FailureRate-LED

MASTER LEDtube Mains T5

Lifetime



Lumen Maintenance Diagram

