

Installation Instructions for USB-RS232 Converter incl. Driver V1.1 for IHC Control

Application

The USB-RS232 Converter incl. Diver V1.1 is applied for data transfer between an IHC Visual Controller (with RS232 interface) and a computer not supplied with RS232, but USB only. Operating systems supporting the Converter: Microsoft Windows® 98, 2000, ME and XP. Applicable baud rates up to 500 kbps. The converter is compatible with USB version 1.1.

Construction

The Converter consists of a 1.6 m cable with:
 - a USB type A male plug (for the USB port on the computer) and
 - a RS232 male plug (for connection to the IHC Visual controller via the cable 120B1008).
 The Converter cable also includes an electronic system for communication with the driver.
 Power to the converter is supplied via the USB connection.

Installing the Driver

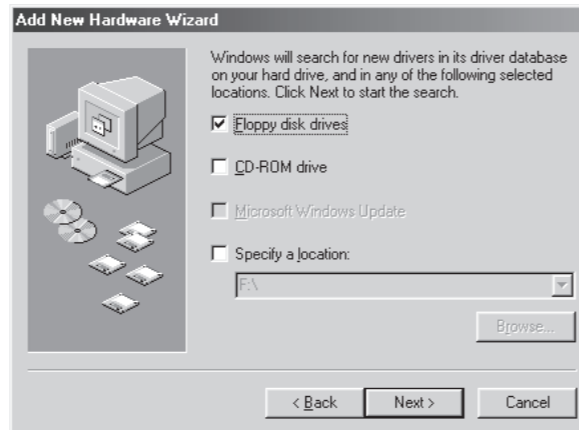
- ① Plug the USB cable into the USB port of your PC. Windows automatically detects "USB device" and invokes "Add new hardware Wizard".
- ② Click "Next" to let your PC search for the appropriate driver for the device.



- ③ Select "Search for the best driver for your device", and click "Next".



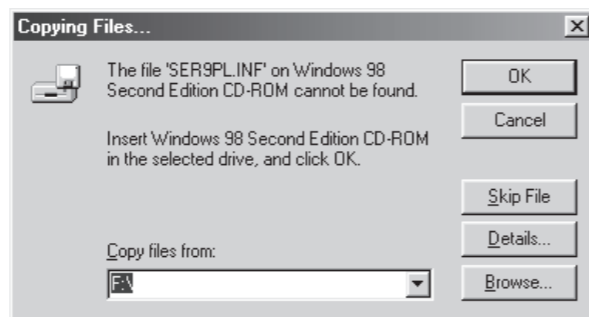
- ④ Select "Floppy disk drives", and click "Next".



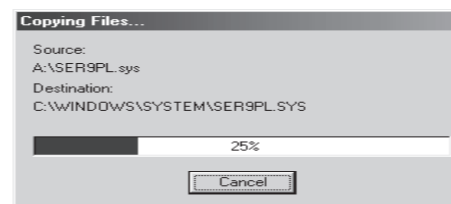
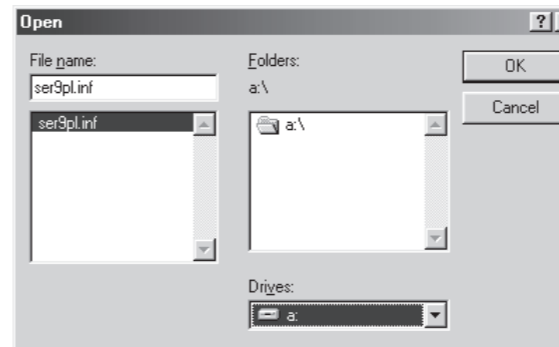
- ⑤ Windows finds the USB for the USB/RS232 device. Now, click "Next" to load the driver.



- ⑥ Windows locates the network driver on the installation disk. Click OK to continue.



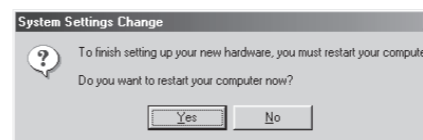
- ⑦ Select the location of the drivers on the installation disk. Then click OK to continue.



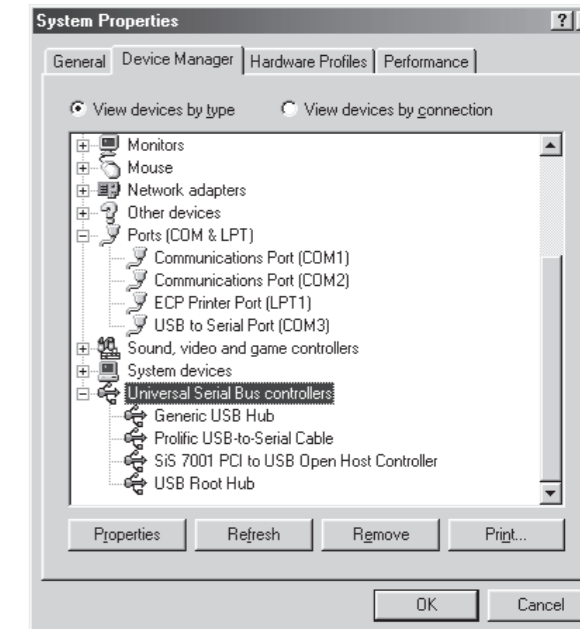
- ⑧ Windows has finished installing the USB driver for the device. Click "Finish" to end "Add New Hardware Wizard". The USB has now been properly installed.



- ⑨ Click "Yes" to restart the system for all the changes to take effect. If "No" is clicked the USB/RS232 device will not work until the system has been restarted.



- ⑩ Check which COM port the system has allocated to the USB converter. Then go to the Windows "Start" menu; Select "Settings", then "Control Panel", followed by "System" and finally "Device Manager". The driver can be seen to be correctly installed when "Prolific USB to Serial Cable" is listed under "Universal Serial Bus controllers", and "USB to Serial Port (COM3)" is listed under "Port".



Installationsvejledning til USB-RS232 Converter med Driver V1.1 til IHC Control

Anvendelse

USB-RS232 Converter med Driver V1.1 anvendes til kommunikation mellem en IHC Visual® controller og en PC, der ikke er forsynet med RS232, men kun med en USB-port.

Converteren understøttes af:

Microsoft Windows® 98, 2000, ME samt XP.

Converteren understøtter baud-rater op til 500 kbps og er kompatibel med USB version 1.1 specifikationen.

Konstruktion

Converteren består af et 1,6 m langt kabel med:

- USB type A han-stik (tilsluttes PC'ens USB-port)
- RS232 hanstik (tilsluttes forbindelseskabel 120B1008) til IHC Visual Controlleren).

I kablet er integreret et elektronisk system, som kommunikerer med den medfølgende driver.

Converteren strømforsynes fra USB-forbindelsen.

Installation

1. Indsæt USB-kablet i PC'ens USB-port. Windows detekterer automatisk USB-hardwaren og meddeler "USB Device ("Windows har fundet ny hardware") og spørger: "Add new hardware?" ("Tilføj ny hardware?").
2. Ved at klikke på "Next" ("Næste") starter PC'eren søgningen efter den driver, der passer til USB-hardwaren.



3. Vælg "Search for the best driver for your device" ("Søg efter den bedste driver til hardwaren"), og klik på "Next" ("Næste").



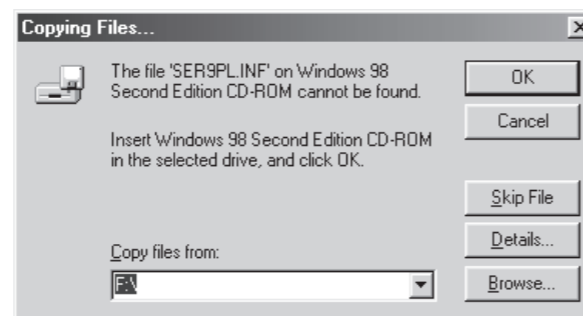
4. Vælg "Floppy disk drives" ("Floppy disk drev"), og klik på "Next" ("Næste").



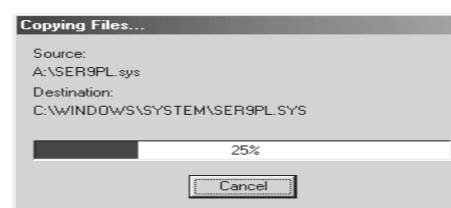
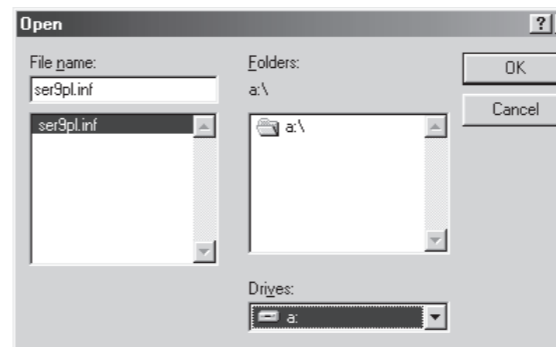
5. Når Windows har fundet USB'en til USB/RS232 hardwaren, klikkes på "Next" ("Næste") for at indlæse driveren.



6. Windows lokaliserer netværksdriveren på installations-disketten. Klik på OK for at gå videre.



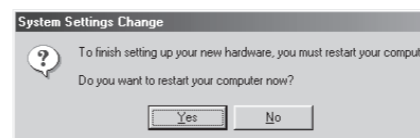
7. Vælg det bibliotek (Folder), hvor driveren er på disketten, og klik OK for at gå videre.



8. Windows har afsluttet installationen af USB driveren. Klik på "Finish" ("Afslut") for at afslutte "Tilføj/fjern programmer" ("Add New Hardware Wizard"). USB driveren er nu korrekt installeret.



9. Klik på "Yes" ("Ja") for at genstarte systemet, så alle ændringer bliver registreret. Klikkes der på "No" ("Nej"), vil USB/RS232 enheden ikke virke, før systemet har været genstartet.



10. Undersøg, hvilken COM-port, der er tildelt. Gå derefter i Windows-"Start"-menuen, og vælg her "Indstillinger" ("Settings"). Herunder klikkes på "Kontrolpanel" ("Control Panel") og derunder på "System" og endelig på "Filhåndtering" ("Device Manager"). I denne er det med: "Prolific USB-to-Serial-Cable" under biblioteket "Universal Serial Bus Controllers" samt "USB to Serial Port" under "Porte" angivet, at driveren er korrekt installeret.

