

**PURUS nye indstik-system
- nu med integreret tætning i TPE.**

Fås i hvid og metaliseret krom



PURUS Indstik-system - sortiment

9D.2

Sammen med PP-rør udgør PURUS Indstik produkter markedets sikreste samlinger.
VA-godkendt.

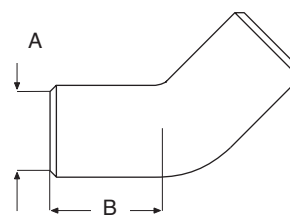


PURUS Indstik-system i PP - rørdele med gummitætning

9D.3

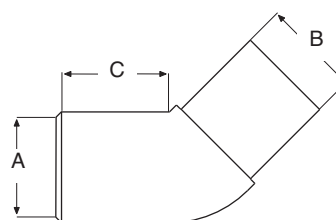
PURUS Vinkel 45° - indstik

| VVS nr. | EAN nr. | A (mm) | B (mm) | Farve |
|------------|---------------|--------|--------|------------------|
| 752011-032 | 7391543519047 | 32 | 42 | Hvid |
| 752011-033 | 7391543524362 | 32 | 42 | Metaliseret/krom |
| 752011-040 | 7391543519528 | 40 | 42 | Hvid |
| 752011-041 | 7391543524379 | 40 | 42 | Metaliseret/krom |



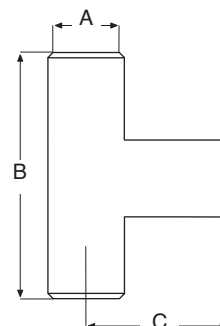
PURUS Vinkel 45° - indstik m/spidsende

| VVS nr. | EAN nr. | A | B | C (mm) | Farve |
|------------|---------------|----|----|--------|------------------|
| 752011-132 | 7391543519634 | 32 | 32 | 45 | Hvid |
| 752011-133 | 7391543524386 | 32 | 32 | 45 | Metaliseret/krom |
| 752011-140 | 7391543519481 | 40 | 40 | 45 | Hvid |
| 752011-141 | 7391543524393 | 40 | 40 | 45 | Metaliseret/krom |



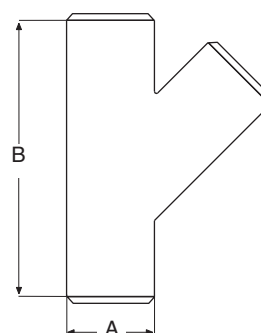
PURUS Grenrør 90° - indstik

| VVS nr. | EAN nr. | A | B | C (mm) | Farve |
|------------|---------------|----|-----|--------|------------------|
| 752001-032 | 7391543519054 | 32 | 118 | 59 | Hvid |
| 752001-033 | 7391543524447 | 32 | 118 | 59 | Metaliseret/krom |
| 752001-040 | 7391543519535 | 40 | 118 | 59 | Hvid |
| 752001-041 | 7391543524454 | 40 | 118 | 59 | Metaliseret/krom |



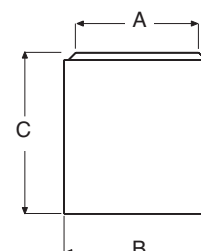
PURUS Grenrør 45° - indstik

| VVS nr. | EAN nr. | A (mm) | B (mm) | Farve |
|------------|---------------|--------|--------|------------------|
| 752003-032 | 7391543519542 | 32 | 140 | Hvid |
| 752003-033 | 7391543524461 | 32 | 140 | Metaliseret/krom |
| 752003-040 | 7391543519498 | 40 | 140 | Hvid |
| 752003-041 | 7391543524478 | 40 | 140 | Metaliseret/krom |



PURUS reduktion 40/32 - indstik

| VVS nr. | EAN nr. | A | B | C (mm) | Farve |
|------------|---------------|----|----|--------|-------|
| 752021-040 | 7391543519108 | 32 | 40 | 44 | Hvid |

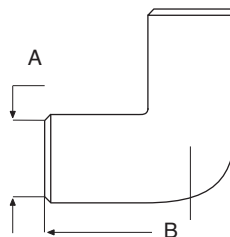


PURUS Indstik-system i PP - rørdele med gummitætning

9D.4

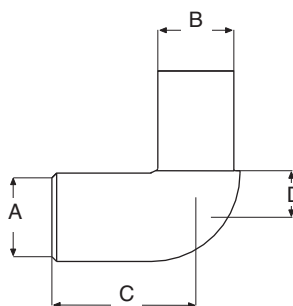
PURUS Vinkel 90° - indstik

| VVS nr. | EAN nr. | A (mm) | B (mm) | Farve |
|------------|---------------|--------|--------|------------------|
| 752014-032 | 7391543519030 | 32 | 61 | Hvid |
| 752014-033 | 7391543524409 | 32 | 61 | Metaliseret/krom |
| 752014-040 | 7391543519511 | 40 | 64 | Hvid |
| 752014-041 | 7391543524416 | 40 | 64 | Metaliseret/krom |



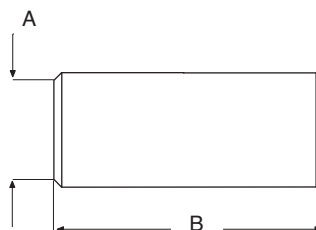
PURUS Vinkel 90° - indstik m/spidsende

| VVS nr. | EAN nr. | A | B | C | D | Farve |
|------------|---------------|----|----|----|----|------------------|
| 752014-132 | 7391543519115 | 32 | 32 | 61 | 26 | Hvid |
| 752014-133 | 7391543524423 | 32 | 32 | 61 | 26 | Metaliseret/krom |
| 752014-140 | 7391543519641 | 40 | 40 | 61 | 20 | Hvid |
| 752014-141 | 7391543524416 | 40 | 40 | 61 | 20 | Metaliseret/krom |



PURUS Muffe - indstik

| VVS nr. | EAN nr. | A (mm) | B (mm) | Farve |
|------------|---------------|--------|--------|------------------|
| 752025-032 | 7391543519023 | 32 | 84 | Hvid |
| 752025-033 | 7391543524485 | 32 | 84 | Metaliseret/krom |
| 752025-040 | 7391543519504 | 40 | 85 | Hvid |
| 752025-041 | 7391543524492 | 40 | 85 | Metaliseret/krom |

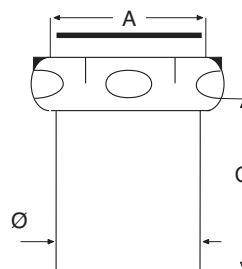


PURUS Indstik-system i PP - rørdele med gummitætning

9D.5

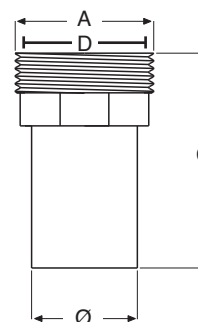
PURUS Overgang - indvendigt gevind og indstik

| VVS nr. | EAN nr. | Ø (mm) | A (mm) | C (mm) |
|------------|---------------|--------|--------|--------|
| 750410-010 | 7391543519122 | 32 | 1 1/4" | 37 |
| 750410-011 | 7391543519139 | 32 | 1 1/2" | 37 |
| 750410-041 | 7391543519559 | 40 | 1 1/2" | 37 |



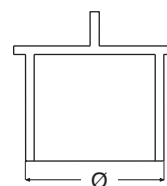
PURUS Overgang - udvendigt gevind og indstik

| VVS nr. | EAN nr. | Ø (mm) | A (mm) | C (mm) | D (mm) |
|------------|---------------|--------|--------|--------|--------|
| 750412-011 | 7391543519078 | 32 | 1 1/2" | 65 | |
| 750412-010 | 7391543519085 | 32 | 1 1/4" | 65 | |
| 750412-008 | 7391543519146 | 32 | 1" | 65 | |
| 750412-006 | 7391543519153 | 32 | 3/4" | 65 | 1/2" |



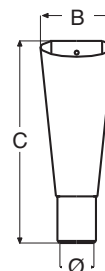
PURUS Låg - indstik

| VVS nr. | EAN nr. | Ø (mm) | Farve |
|------------|---------------|--------|------------------|
| 750388-032 | 7391543519603 | 32 | Hvid |
| 750388-040 | 7391543519610 | 40 | Hvid |
| 750388.034 | 7391543524683 | 32 | Metaliseret krom |
| 750388.042 | 7391543524690 | 40 | Metaliseret krom |



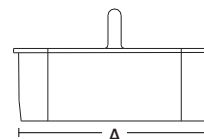
PURUS Afløbstragt - indstik

| VVS nr. | EAN nr. | Ø (mm) | B (mm) | C (mm) |
|------------|---------------|--------|--------|--------|
| 750388-232 | 7391543519061 | 32 | 70 | 194 |



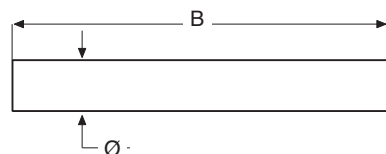
PURUS Lugtstop til afløbstragt

| VVS nr. | EAN nr. | A (mm) |
|------------|---------------|--------|
| 750388-270 | 7391543519627 | 70 |



PURUS PP-rør til indstik

| VVS nr. | EAN nr. | Ø (mm) | B (mm) | Farve |
|------------|---------------|--------|--------|-------|
| 750165-010 | 7391543515483 | 32 | 1000 | Hvid |
| 750167-010 | 7391543515490 | 32 | 2000 | Hvid |
| 750165-011 | 7391543515506 | 40 | 1000 | Hvid |
| 750167-011 | 7391543515513 | 40 | 2000 | Hvid |



PURUS ABS-rør til indstik

| VVS nr. | EAN nr. | Ø (mm) | B (mm) | Farve |
|------------|---------------|--------|--------|------------------|
| 750155-110 | 7391543524607 | 32 | 1000 | Metaliseret/krom |
| 750155-111 | 7391543524621 | 40 | 1000 | Metaliseret/krom |

Vedligeholdelse:

Ved rengøring af Purus rørprogram må der kun bruges alm. sæbevand. I modsat tilfælde kan overfladen blive mat.

Installation:

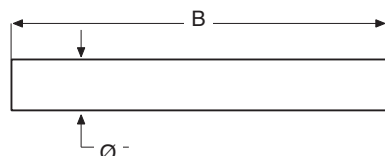
PP-rør bruges til indstik.

Teknisk info:

Brugstemperatur: Kontinuerligt = 90°C. (PP) - 75°C (ABS)
Kortvarigt = 100°C. (PP) - 90°C (ABS)

Materiale:

Fittings - Polypropen (PP)
Konisk pakning - TPE
Pakninger - EPDM



PURUS ABS-rør til indstik

| VVS nr. | EAN nr. | Ø (mm) | B (mm) | Farve |
|------------|---------------|--------|--------|------------------|
| 750150-010 | 7391543506757 | 32 | 225 | Hvid |
| 750154-041 | 7391543506740 | 40 | 380 | Hvid |
| 750152-011 | 7391543506719 | 40 | 535 | Metaliseret/krom |
| 750112-010 | 7391543506795 | 32 | 225 | Metaliseret/krom |