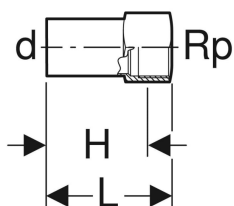
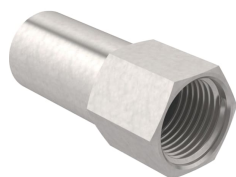


## Geberit Mapress Rustfrit overgang med indvendigt gevind og nippelende



Eksempelbillede

### Tekniske data

Materiale | CrNiMo-stål 1.4401 (EN 10088)

Varenr.	VVS nr.	DN	d, ø	Rp	L	H
Disse produkter passer til system: <b>Geberit Mapress Rustfrit</b>						
33846	034362263	20 / 15	22 mm	1/2 "	5.8 cm	4.5 cm
33848	034362324	25 / 15	28 mm	1/2 "	6.6 cm	5.3 cm
33850	034362365	32 / 15	35 mm	1/2 "	6.9 cm	5.6 cm
33852	034362410	40 / 15	42 mm	1/2 "	7.4 cm	6.1 cm
33854	034362433	50 / 15	54 mm	1/2 "	7.9 cm	6.6 cm
33860	034362607	65 / 15	76.1 mm	1/2 "	10.4 cm	9.1 cm
33862	034362632	80 / 15	88.9 mm	1/2 "	11.3 cm	10 cm
33864	034362662	100 / 15	108 mm	1/2 "	13.4 cm	12.1 cm
Disse produkter passer til system: <b>Geberit Mapress Rustfrit (FKM blå)</b>						
33846	034362263	20 / 15	22 mm	1/2 "	5.8 cm	4.5 cm
33848	034362324	25 / 15	28 mm	1/2 "	6.6 cm	5.3 cm
33850	034362365	32 / 15	35 mm	1/2 "	6.9 cm	5.6 cm
33852	034362410	40 / 15	42 mm	1/2 "	7.4 cm	6.1 cm
33854	034362433	50 / 15	54 mm	1/2 "	7.9 cm	6.6 cm
33860	034362607	65 / 15	76.1 mm	1/2 "	10.4 cm	9.1 cm
33862	034362632	80 / 15	88.9 mm	1/2 "	11.3 cm	10 cm
33864	034362662	100 / 15	108 mm	1/2 "	13.4 cm	12.1 cm
Disse produkter passer til system: <b>Geberit Mapress Rustfrit (gas)</b>						
33846	034362263	20 / 15	22 mm	1/2 "	5.8 cm	4.5 cm
33848	034362324	25 / 15	28 mm	1/2 "	6.6 cm	5.3 cm
33850	034362365	32 / 15	35 mm	1/2 "	6.9 cm	5.6 cm
33852	034362410	40 / 15	42 mm	1/2 "	7.4 cm	6.1 cm
33854	034362433	50 / 15	54 mm	1/2 "	7.9 cm	6.6 cm
33860	034362607	65 / 15	76.1 mm	1/2 "	10.4 cm	9.1 cm
33862	034362632	80 / 15	88.9 mm	1/2 "	11.3 cm	10 cm
33864	034362662	100 / 15	108 mm	1/2 "	13.4 cm	12.1 cm



- Produktet kan findes i rødgods under Geberit Mapress Kobber sortimentet (f.eks. varenummer 63561)