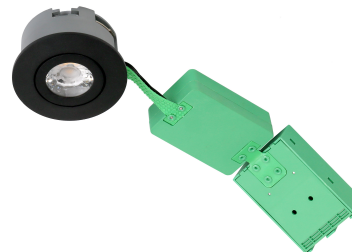


DATASHEET

ARDEN

Arden 6W LED Mains Dim Exterior Round Black Bezel 927

Mains Dimmable LED Recessed Downlighter
 Round Black Bezel For Exterior
 5-Pole Connector Block For Easy Install



GENERAL INFORMATION	
Product Code	NAN6/MD/RO/BK/EXT/927
Product Range	Downlights
Product Category	Downlights
IP Rating	44 to rear
IK Rating	N/A
Warranty	5 Years Core
DIMENSION/WEIGHT	
Dimensions Circular (DIA x H) (mm)	DIA=Ø89, H=45
Dimensions Square/Rectangular (L x W x H) (mm)	L=0, W=0, H=N/A
Cut-out Size (mm)	Ø76
Product Weight (Kg)	0.3
CONSTRUCTION	
Body Material	Aluminium / Nylon
Body Colour	Black RAL9005
Optical Material	N/A
Optical Finish	N/A
Termination	5x2x2.5mm sq. Push In Terminal
Driver - Interal or Remote	Integral
PACKAGING	
Carton Dimensions (mm)	N/A
Quantity per Outer Carton	N/A
Total Weight incl. Carton (Kg)	N/A

LUMINAIRE PERFORMANCE	
Energy Rating	N/A
Luminaire Lumens (lm)	N/A
Power Consumption (W)	6
Efficacy	100
Operating Temp. (Min/Max)	-20°C to 25°C
LIGHT SOURCE	
Type	LED
Correlated Colour Temp.	2700
Correlated Rendering Index (CRI)	>90
Lumen Depreciation	L70 50000
SDCM	<3
ELECTRICAL INPUT	
VOLTAGE (V)	220-240V AC
Operating Frequency	50
In Rush	N/A
Drivers per MCB*	N/A
Class	Class 2
Power Factor	>0.95
Cable Entry	Connector Block
ELECTRICAL OUTPUT	
Forward Current (mA)	-
Forward Voltage (Vf)	N/A
EMERGENCY DATA	
Mode of Operation	N/A
Battery Duration	N/A
Battery Type	N/A
Battery Specification	N/A
Ballast Lumen Factor (BLF)	N/A
DIMMING	
DALI	N/A
OTHER	Mains Dimming
Switch Dim	N/A
Corridor Function	N/A
SENSORS	
Microwave	N/A
PIR	N/A
STANDARDS/APPROVALS	
CE Marked	Yes
Certificate of Conformity	Yes
Accreditations	N/A
BARCODE	
EAN NUMBER	5055943056145

* GUIDE ONLY