

## Datablad | Varenummer: 207-5485/316-000

cable repair set; for multicore cables; Straight-through; with glue; Cable diameter 8 - 24 mm; with enclosed splicing connectors; medium-walled; black



<https://www.wago.com/207-5485/316-000>



Farve: ■ sort

Cable repair kit for use in fixed installations

The cable repair kit is unsuitable for use under-water or in the ground, as there is no longitudinal water tightness.

Included in the repair kit:

- 1 x Cable H07 V-U 4 mm<sup>2</sup>, 150 mm long, black
- 1 x Cable H07 V-U 4 mm<sup>2</sup>, 150 mm long, green/yellow
- 1 x Cable H07 V-U 4 mm<sup>2</sup>, 150 mm long, blue
- 1 x Shrink tube, diameter: 24 mm, shrink rate 4:1, 160 mm long, black
- 10 x 2773-2401 Inline splicing connector, for solid and stranded conductors

### This item includes:



Artikelnr.: [2773-2401](#)

10

PUSH WIRE® Inline fjedersamlemuffe; til entrådede og flertrådede ledere; maks. 4 mm<sup>2</sup>; 2-leder; gennemsigtigt hus; Transparent cover; Omgivende temperatur: maks. 85 °C (T85); 4,00 mm<sup>2</sup>; transparent

### Elektriske data

#### Bedømmelse IEC/EN

Mærkninger iht.	EN 60664
Nominal spænding (II/2)	450 V
Nominal overspænding (II/2)	4 kV
Mærkestrøm	32 A

#### Approvals per UL 1059

Godkendelser iht.	UL 486C
Mærkespænding UL (brug gruppe C)	600 V
Mærkestrøm UL (brug gruppe C)	20 A

### Tilslutningsdata

### Connection 1

Solid leder	0,75 ... 4 mm <sup>2</sup> / 18 ... 12 AWG
Trådet leder	1,5 ... 4 mm <sup>2</sup>
Afisoleringslængde	10 ... 11 mm / 0.39 ... 0.43 tommer

### Materiale Data (engelsk)

Note på materiel data

[Information on material specifications can be found here](#)

Farve	sort
Brand last	4.88 MJ
Vægt	43.2 g
Schrumpfemperatur min.	110 °C
Schrumpfemperatur max.	200 °C

### Kommercielle data

PU (SPU)	18 (1) Stykke
Oprindelsesland	QU
GTIN	4066966371246
Told tarifnummer	85369010000

### Environmental Product Compliance

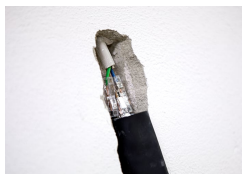
RoHS Compliance Status	Compliant, No Exemption
------------------------	-------------------------

### Betjeningsvejledning

#### Applikation:



Drilled cable

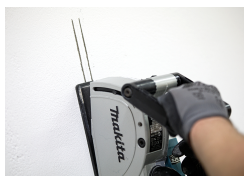


Connect the cable using the cable repair kit.



Close the damaged area discreetly.

#### Applikation:



Milled cable



Connect the cable using the cable repair kit.



Heat the shrink tube and properly reclose the damaged area.