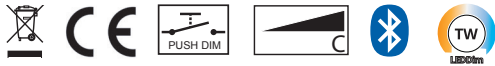
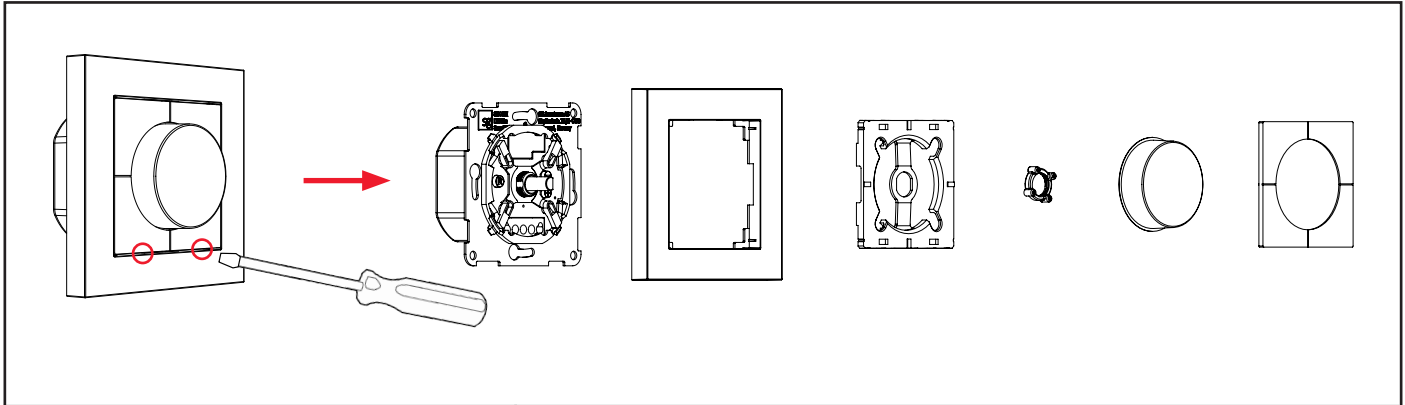


# TW LEDDim Smart

DIGITAL TRAILING EDGE DIMMER



220-240V, 50/60Hz, 3-400VA, -20°C to 35°C



**!** L — P  
Max 50m

0-1s

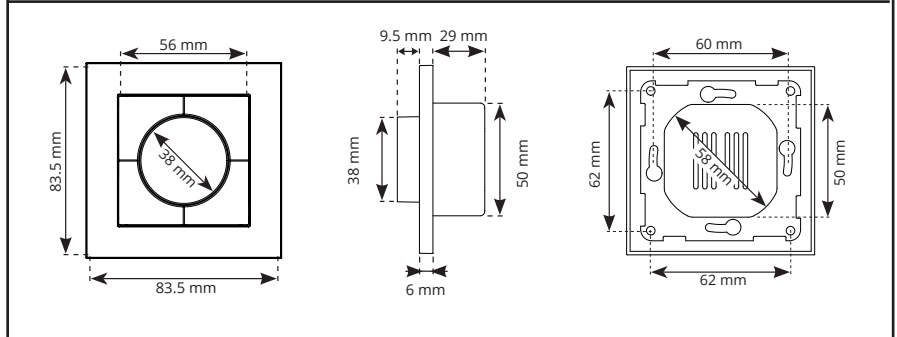
>1s

**NO:** Impulsbryter (valgfritt)  
**DK:** Impulsafbryder (valgfri)  
**SE:** Impulsbrytare (valgfritt)  
**EN:** Push button (optional)  
**FR:** Bouton-poussoir (optionnel)  
**NL:** Drukknop (optioneel)  
**DE:** Druckknopf (optional)  
**FI:** Painonappi (valinnainen)

### Minimum dimming level adjustment

1

2



Rev: 04.06.2.2020

**NORWAY**  
**SG Armaturen AS**  
 Skytterheia 25  
 N-4790 Lillesand

**SWEDEN**  
**SG Armaturen AB**  
 Tel: +46 31 81 71 10  
 info@sg-ab.se  
 www.sg-ab.se

**DENMARK**  
**SG Armaturen A/S**  
 Tel: +45 70 70 72 13  
 info@sg-as.dk  
 www.sg-as.dk

**FRANCE**  
**SG Lighting SA/NV**  
 Tel: +33(0) 4 94 93 00 00  
 info.france@sglighting.net  
 www.sglighting.net

**GERMANY**  
**SG Leuchten GmbH**  
 Tel: +49 40 23 99 44 59  
 info@sg-leuchten.de  
 www.sg-leuchten.de

Tel: +47 37 50 03 00  
 firmapost@sg-as.no  
 www.sg-as.no

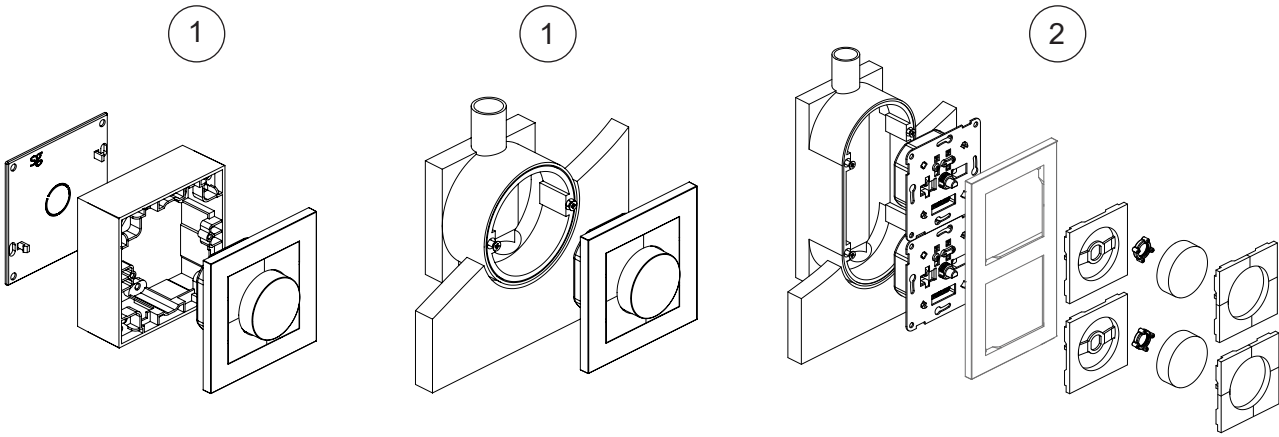
**FINLAND**  
**SG Armaturen Oy**  
 info@sg-oy.fi  
 www.sg-oy.fi

**UNITED KINGDOM**  
**SG Lighting LTD**  
 Tel: +47 37 50 03 00  
 info@sglighting.co.uk  
 www.sglighting.co.uk

**BENELUX**  
**SG Lighting SA/NV**  
 Tel: +32(0) 15 20 72 71  
 info.benelux@sglighting.net  
 www.sglighting.net

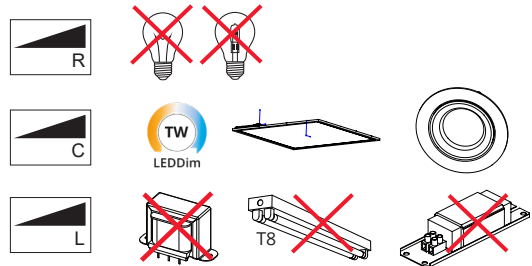
**INTERNATIONAL**  
**SG Lighting Co Ltd.**  
 Tel: +86 769 88 49 20 88  
 cindy@sgdgc.com  
 www.sg-as.com


Max. load



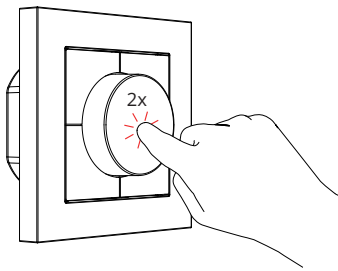
	R	C	L
1	✗	Max. 320W	✗
2	✗	Max. 240W/pc.	✗

Maximum number of luminaires: 22

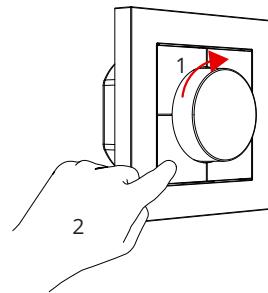


Works exclusively with 

Mode

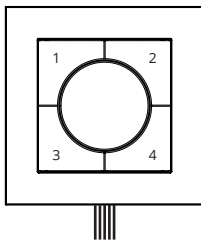





Save settings



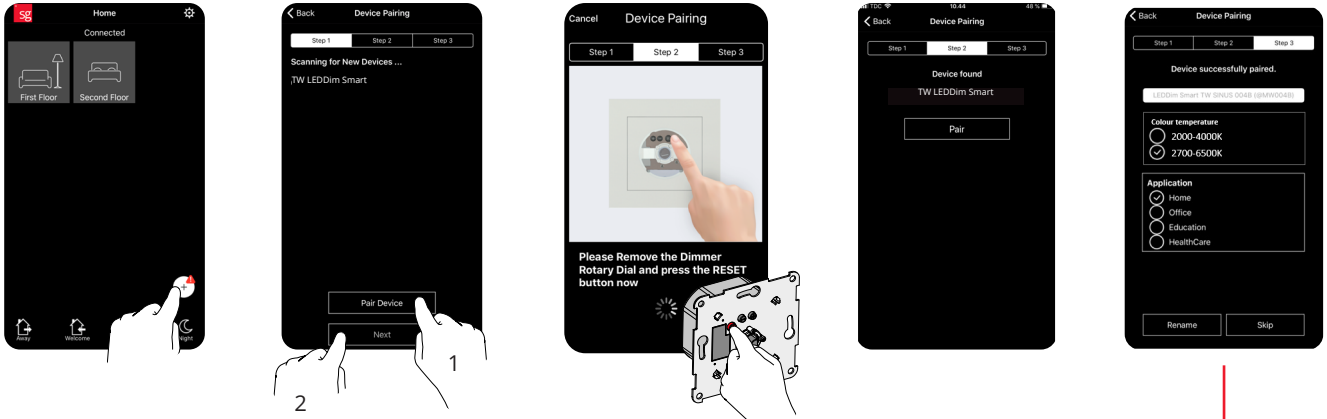
 10 sec

Default scenario

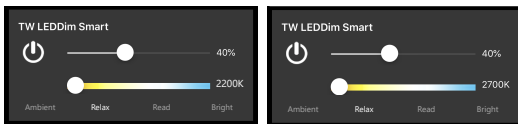


	 2700-6500K	 2000-4000K	
1	2700K	2000K	40%
2	3000K	2200K	60%
3	4000K	2700K	80%
4	6500K	4000K	100%

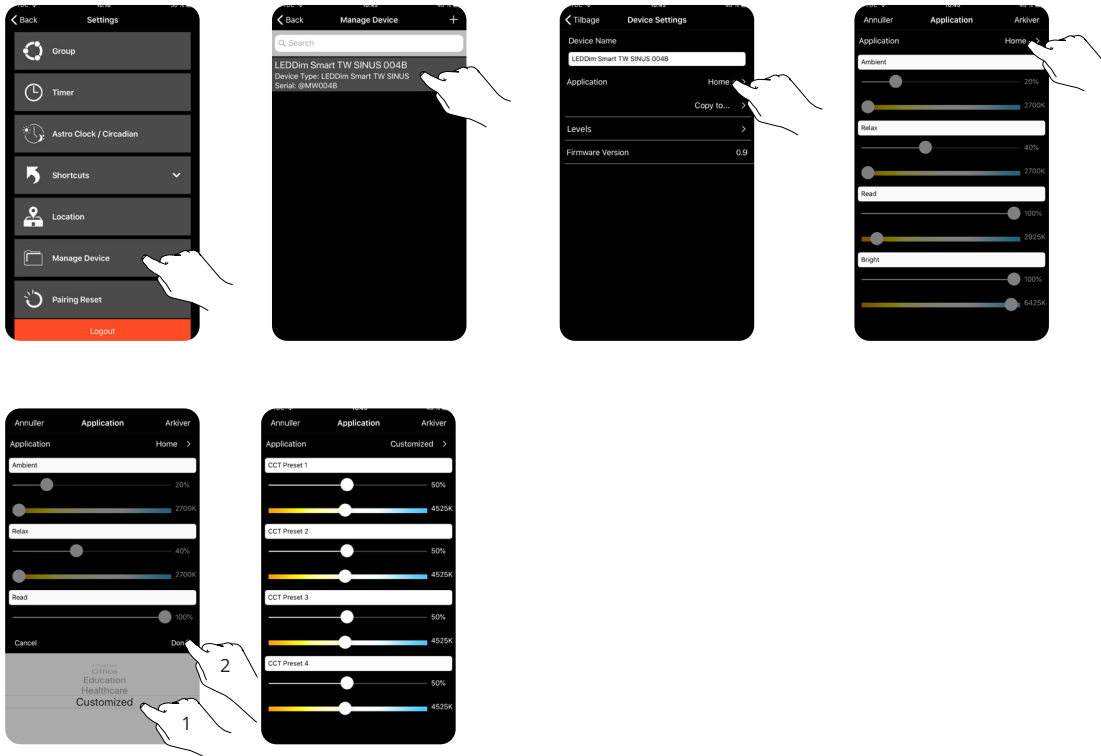
## Pairing



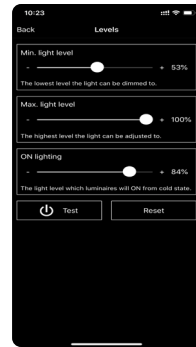
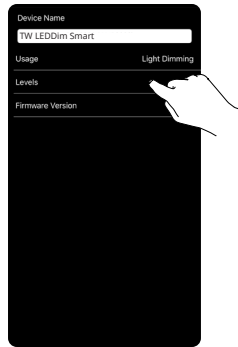
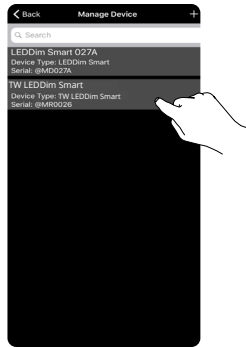
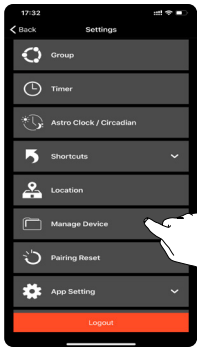
2000-4000K			Home			Education			Office			Healthcare		
Ambient	2000K	20%	Ambient	2700K	20%	Relax	3000K	50%	Presentation	3000K	30%	Relax	3000K	50%
Relax	2200K	40%	Relax	2700K	40%	Dialogue	4000K	70%	Dialogue	4000K	70%	Dialogue	4000K	70%
Read	2700K	100%	Read	3000K	100%	Concentration	4525K	100%	Concentration	4525K	100%	Concentration	4525K	100%
Bright	4000K	100%	Bright	4000K	100%	Energy	6500K	100%	Energy	6500K	100%	Energy	6500K	100%



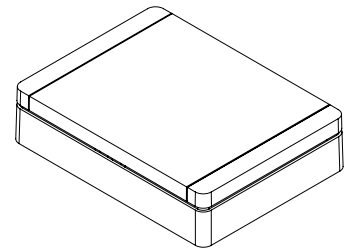
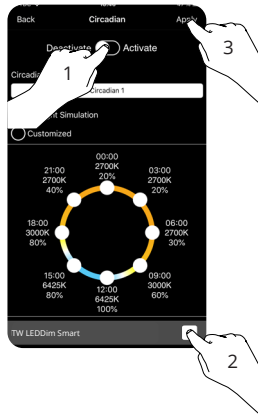
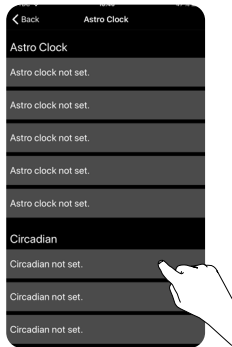
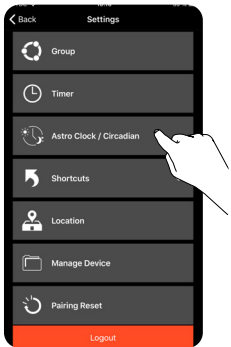
## Customise preset



## Levels

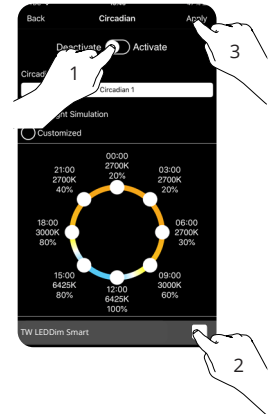
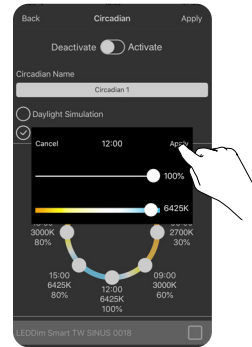
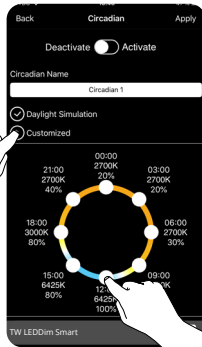
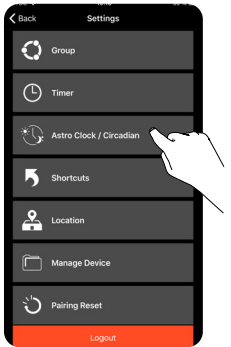


## Circadian



Use with SG Smart Gateway

## Circadian Customized



- NO:** Kan kun installeres og vedlikeholdes av en registrert installasjonsvirksomhet.
- DK:** Må kun installeres og vedligeholdes af uddannet elektriker.
- SE:** Skall installeras och underhållas av behörig elektriker.
- EN:** Only to be installed and maintained by an authorized electrician.
- FR:** Doit être installé et maintenu par un électricien qualifié.
- NL:** Mag alleen geïnstalleerd en onderhouden worden door een bevoegde electricien.
- DE:** Dieses Produkt darf nur durch autorisiertes Personal (z.B. Elektro-Installateur) angeschlossen, in Betrieb genommen und gewartet werden.
- FI:** Asentaa ja huoltaa saa vain valtuutettu sähköasentaja

- NO:** Skru av strømmen før montering.
- DK:** Sluk for strømmen inden montering.
- SE:** Stäng av strømmen innan montering.
- EN:** Turn off power before installing.
- FR:** Couper le courant avant l'installation.
- NL:** Stroom uitschakelen voor u het toestel installeert.
- DE:** Vor Installationsarbeiten den Strom abschalten.
- FI:** Sammuta virta ennen kytkemistä